



SCAN ME

Risk and resilience assessment

This project has received funding from the European Union's Horizon 2020 research and innovation programme under grant agreement No 821282

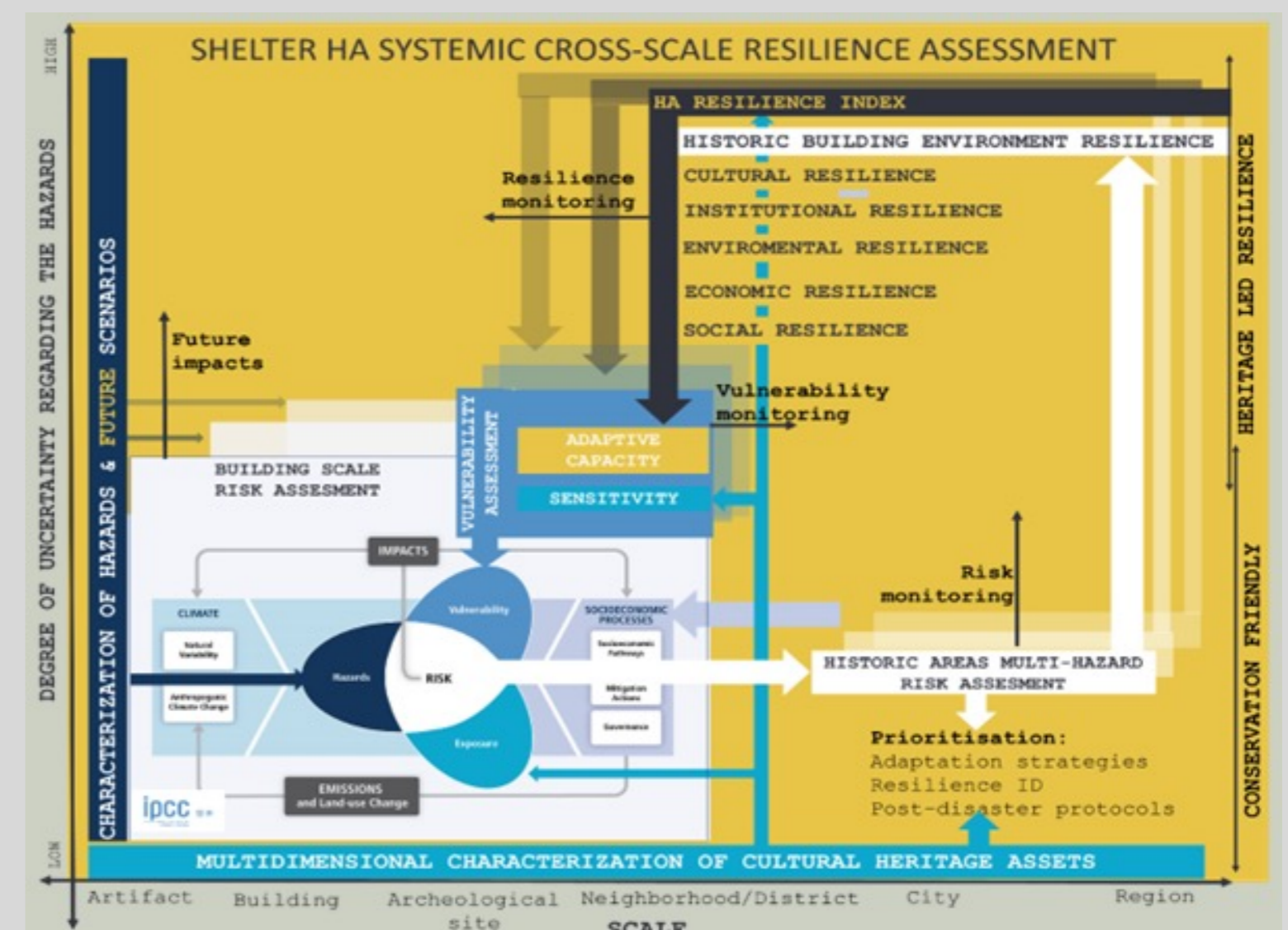
Creating a knowledge generation methodology to build multidimensional, cross-scale and systemic risk and resilience assessment that provides information to all the phases of DRM, by bringing together:

- The SHELTER operative knowledge framework;
- The indicator framework for the quantification of a multidimensional, cross-scale and systemic resilience;
- The anatomy of Historic Areas and its characterization methodology;
- The characterization of natural hazards and climate change threats, impacts and scenarios in relation with CH typologies.

How

This methodology builds a robust, flexible and replicable risk assessment framework that is suitable for different scales, different heritage and different potential multi-hazards scenarios by establishing a uniform calculation method, distinguishing the capacity and vulnerability related to different hazards by specific indicators.

Categorises cultural and natural heritage according to existing ontologies and addresses the concept of risk-informed thinking, introducing a holistic approach to heritage categorisation in DRM.



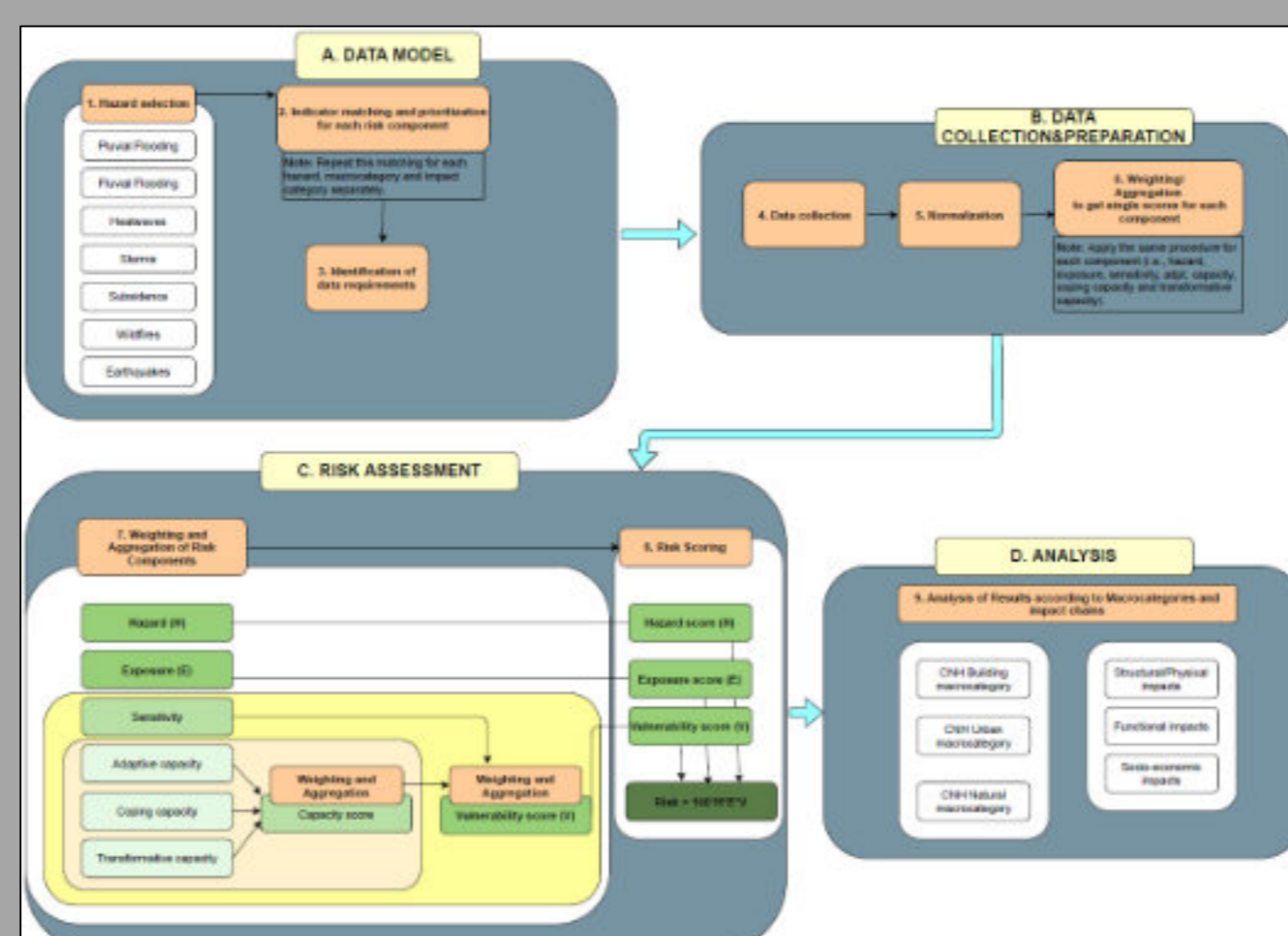
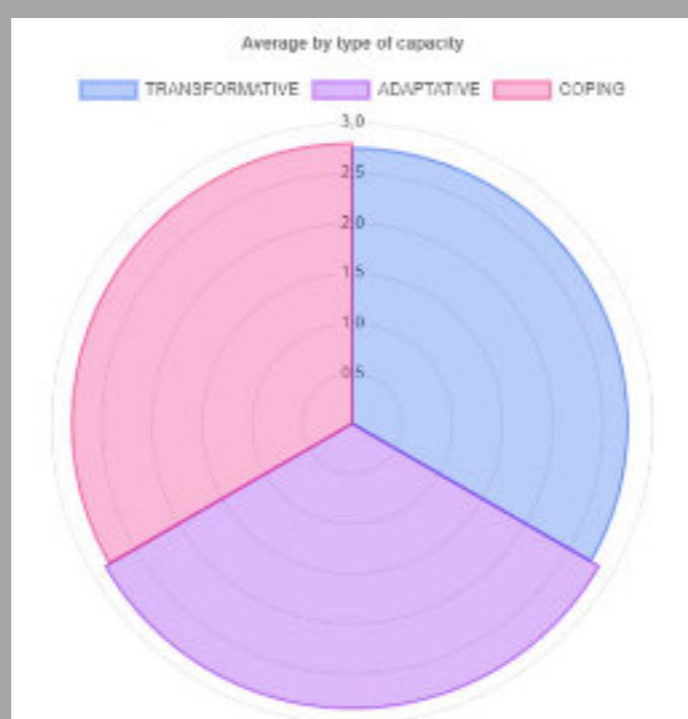
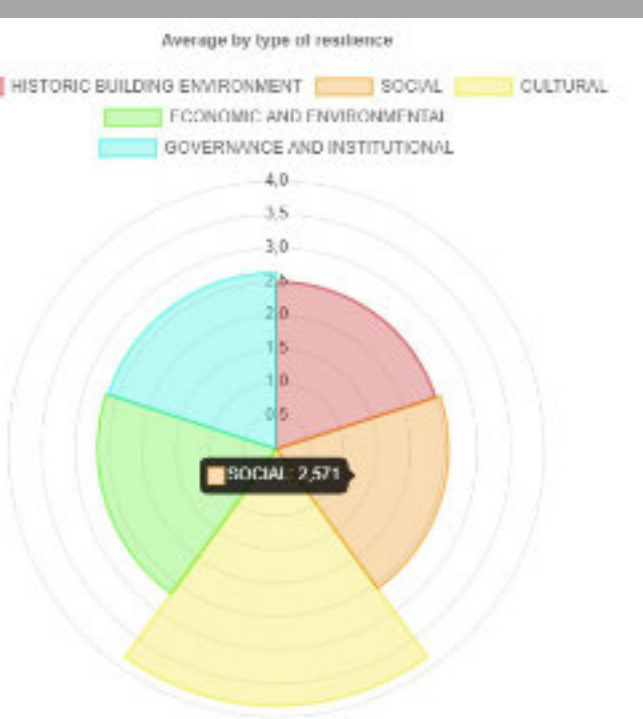
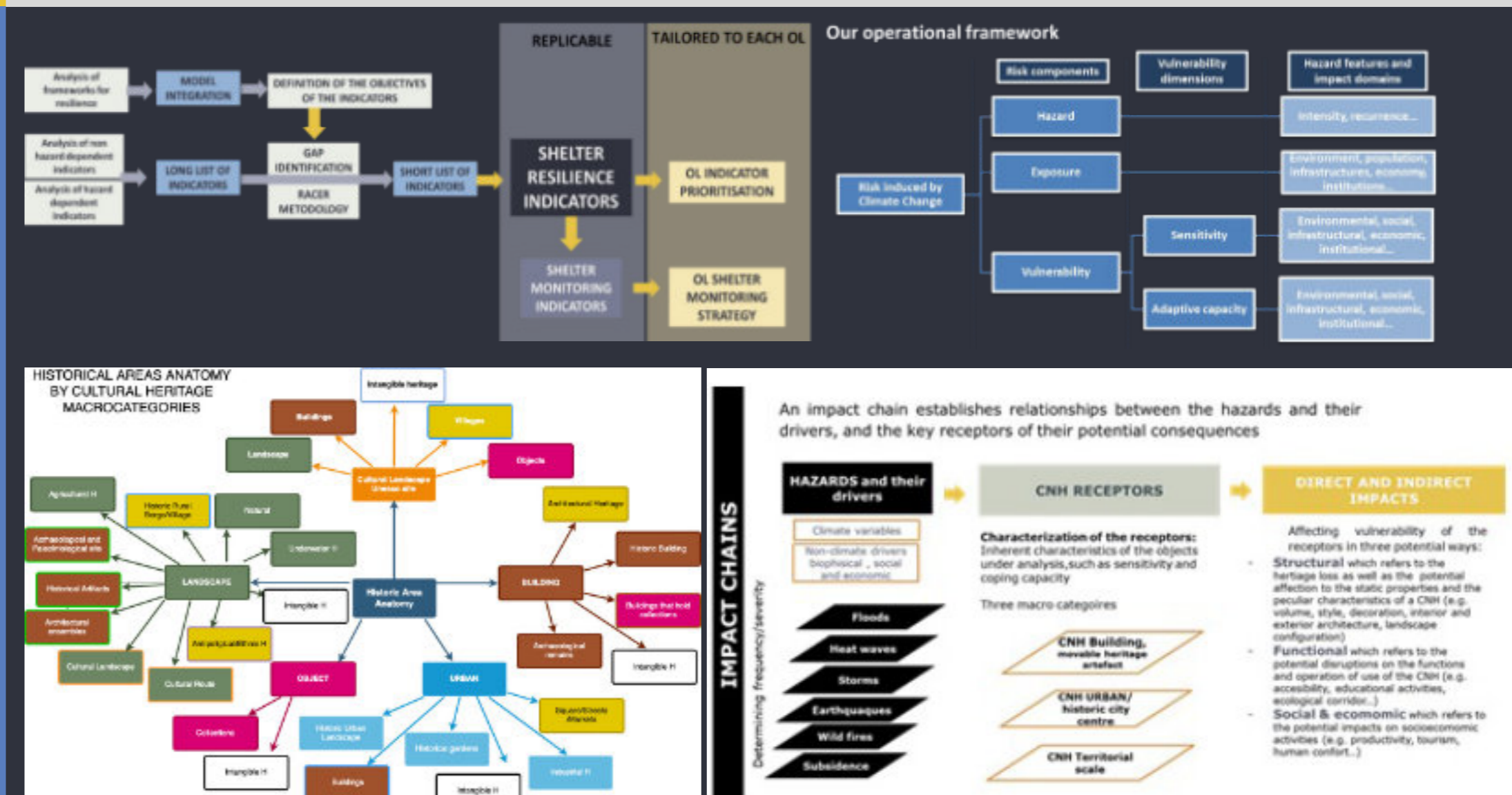
Results

Specific hazard risk assessment

Replicable, indicator-based and spatially explicit risk assessment methodology for Cultural and Natural Heritage based on an indicator-based approach

Historic Area resilience index

An easy-to-use tool for self-assessment based on qualitative indicators aiming at identifying strengths and weaknesses and better focus future improvement strategies.



What's next?

The risk and resilience assessment methodology is designed to lead to an algorithm using:

- Quantifiable indicators and a data model
- Applicability to assets and areas
- Risk, hazard, vulnerability and sensitivity scoring

Leading to next phase and developing a tool for the SHELTER dashboard

