



Strategy for early recovery roadmap



This project has received funding from the European Union's Horizon 2020 research and innovation programme under grant agreement No 821282

The task has developed an overall strategy for building an Early Recovery Roadmap to increase the resilience of historic areas. It provides simple guidelines for identifying effective pre-planned strategies to be quickly mobilized, allowing greater attention to event-specific, post-disaster recovery actions that must be performed according to prevailing conditions and newly-generated data. The Roadmap has been conceived as an operative tool to enable hazard-related effective coordination and decision-making structures and facilities rapid yet informed action in an otherwise demanding and chaotic environment.

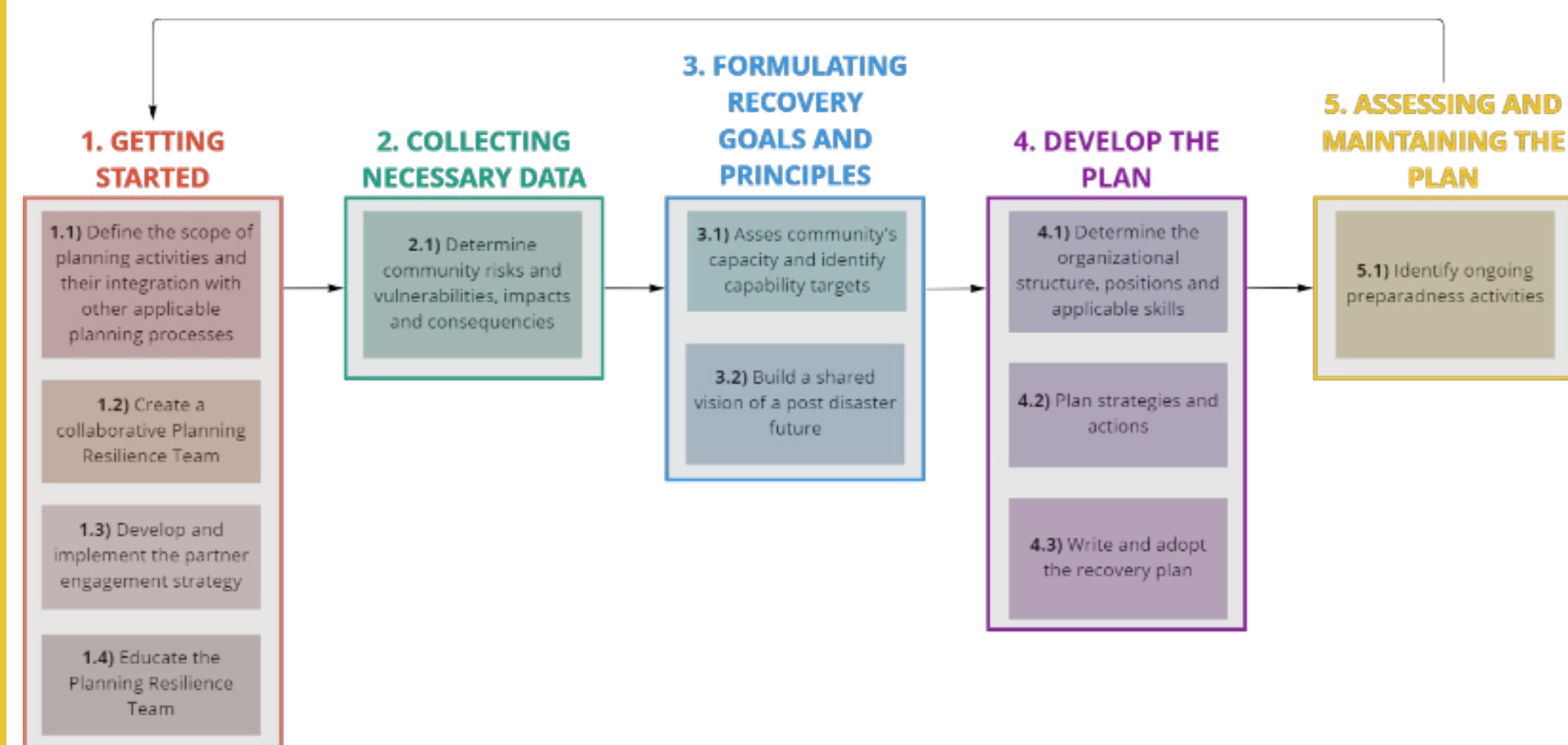
Alongside the general Roadmap, five tailored Roadmaps have been built, one for each SHLETEROpen Lab. They have been designed, on one side, to get feedback on the clarity of the overall strategy, the steps and the activities of the general Roadmap; on the other side, to understand which steps have been already completed and what else should be done by OLs to build their own early recovery Roadmap.

How

The Early Recovery Roadmap is a sequence of step-by-step instructions to be followed. It is provided with:

- 5 phases, with one or more key-activities and sub-activities;
- a related checklist, for each sub-activities, to track progress and identify what could be done or implement;
- a flowchart, to make the planning process clearer, helping to understand operations to perform;
- input-output diagrams for each phase.

There could be external input, input provide by SHELTER results/activities and input by previous phases.



Tool | Results

The Strategy for Early Recovery Roadmap has proved to be a useful tool to design a Pre-Disaster Recovery Plan to follow to improve the resilience of historic areas. The key findings of the process are:

- To form a collaborative team, involving the community;
- To perform disaster risk assessment and community's priorities;
- To evaluate community's capacity and available resources;
- To plan short, medium and long-term recovery goals;
- To establish roles and responsibilities at the basis of Pre-Disaster Recovery Plan;
- To monitor the effectiveness of recovery strategies and actions.

Functionality

This work contributes to the SHELTER operational framework, on the one hand, by providing practical guidelines to be followed by organisations who are seeking a clear and effective way to build their Pre-Disaster Recovery Plan; on the other hand, by increasing the knowledge of what is currently available at a territorial level for each SHELTER Open Lab, what has been already completed in terms of key-activities, and on what they should focus their attention towards the adoption of a Pre-Disaster Recovery Plan able to increase the resilience of communities and historic areas.

